

WELCOME TO RED SWASTIKA SCHOOL

Primary 1 Orientation
13 November 2024



Caring Community
Innovative Leaders
愿景: 博爱, 创新, 引领

PROGRAMME (9.00 am to 10.30 am)

For Parents

Hall Session:

- Welcome address by Vice-Principal
- Sharing by Year Head Lower Primary
- Sharing by RSS Parent Support Group (PSG)

Classroom Session:

- Interaction time with Group Teachers in the classrooms
- Feedback and Closing
- Joining the PSG and Level Chatgroup (by PSG)

For Students:

Orientation activities for students

- Activities by Group Teachers
- Mealbreak
- Bonding Games at Stations around the School



Caring Community
Innovative Leaders
愿景: 博爱, 创新, 引领

Slides from the P1 Orientation will be shared on our school website at the end of November.

PROGRAMME (10.30 am to 11.00 am)

Session for First-Time P1 Parents only (Optional)

Programme for First-Time Parents

- Parent facilitators from our Parent Support Group will share with you their experiences as P1 parents.
- Orientation Group Teachers will address your queries regarding Primary One.

Programme for students of First-Time Parents

- Students will participate in activities organised by our school staff.



Caring Community
Innovative Leaders
愿景: 博爱, 创新, 引领

Year Head's Sharing

Mrs Carol Tng



Caring Community
Innovative Leaders
愿景: 博爱, 创新, 引领



Welcome To Primary School!



Parent-Child Activity Book

Supporting your child through the Primary 1 journey

As our young ones develop at different pace,
allowing them to learn at their own pace helps
them enjoy the learning process.



©Ministry of Education, Singapore

Supporting your child
through the primary journey

Parents and School in Partnership

Help your child succeed in life

Our children do best when schools and parents work hand in hand to support them. Here are some tips to make this happen...

Work with the school to know and support your child

- Have regular conversations with teachers in both academic and non-academic areas – this will help you better guide your child's development.
- Check the teachers' preferred mode of communication – they are not required to share their mobile numbers.
- Understand that teachers may not be able to respond to your queries immediately.

Help your child relate to others

- Work with the teachers to help your child respect differences and resolve disagreements amicably.
- Let the school verify the facts in any incident before taking action to ensure a fair, objective outcome for all parties.


Help your child develop good habits

- Create a conducive home environment for your child to enjoy reading and to finish his/her homework by himself/herself.
- Encourage your child to live a healthy, balanced life with time for sleep and play.

Help your child manage himself/herself

- Guide your child in managing his/her time.
- Encourage your child to help out with household chores.

Our children succeed when parents and schools work hand in hand.



Our children do best when school and parents work hand in hand to support them.



**Caring Community
Innovative Leaders**
愿景: 博爱, 创新, 引领



We want to keep in close contact with you

- First point of contact - **Form Teachers** through emails / phone calls
- School-related matters - **School** is still the best point of contact
- Keep posted of school matters and updates through **Parents Gateway**



P1 & P2 Level Focus

Build routines

Build relationships

BUILDING ROUTINES AND DEVELOPING LEARNING DISPOSITIONS



Walk into the school hall quietly.



Sit down, with your bag in front of you.
Do your silent reading.



Bring an EL storybook on Monday,
Tuesday and Wednesday.



Bring a CL storybook on Thursday
and Friday.

Recess on 2 January 2025

Parents are able to spend recess with your children during recess at the canteen on Day 1 only.

For the first few days of school, all P1 students will have a P2 buddy for recess.

Administrative Matters

- **Car Decal (P1 and 2 only)**
You may apply for your car decal via the given link between 20 and 26 November. The car decal will be handed to your child when school reopens in 2025.
<https://go.gov.sg/rssp1cardecal>
- **Student Survey and Health Declaration**
Please fill in the form if you have not done so:
<https://go.gov.sg/rssstdsurvey2024>

Administrative Matters

- **School Bus Services**

Please download the 'Request for School Bus Services - P1 2025' form from the school website and send the completed form to Goh Transport as soon as possible if you require school bus service in 2025.

- **Email address:** redswastika@gohtpt.com.sg

Person-in-charge: Ms. Ee Poh

Tel. no.: 67755115

Reminder to apply for Giro & Edusave before 2025

How to create GIRO via Parents Gateway

Step 1 - Log in to Parents Gateway



Reminder when filling in Pupil Data Form from MOE

If your child has a Chinese name written in Chinese characters, please fill in the name in the form as well.

ENSURING STUDENT SAFETY

We seek your support on the following:

- SOPs and procedures
- Read the P1 information booklet (will be shared by end November)
- Morning traffic/drop-off - follow instructions by security officer
- Patience and cooperation with the school



P1 Parent Conference

Date: 2 January 2025 (Thursday)

Time: 7.30 am - 10.30 am

- ❖ More information on the P1 Curriculum will be shared with you during P1 Parent Conference.
- ❖ Information on school reopening will be shared via Parents Gateway by end November.



Caring Community
Innovative Leaders
愿景: 博爱, 创新, 引领



Welcome to Orientation Group

13 November 2024

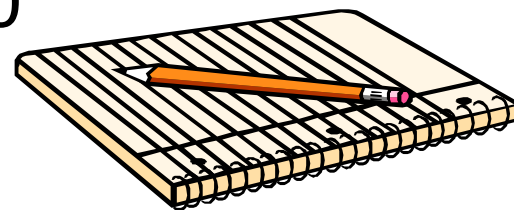


Caring Community
Innovative Leaders
愿景: 博爱, 创新, 引领



CONTACT INFORMATION

- Email address:
redswastika@moe.edu.sg
- School General Office: 64430380



Caring Community
Innovative Leaders
愿景: 博爱, 创新, 引领



TRANSITION TO PRIMARY 1

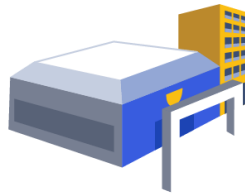
When your child enters primary school, they will experience:



New friends and teachers



New routines



New learning environment

HOW CAN I SUPPORT MY CHILD THROUGH THE TRANSITION?

- **S**upport your child and encourage them to overcome challenges with you
- **A**ffirm your child by recognising small successes and praising their efforts
- **F**amiliarise your child by easing them into new routines and sharing with them your experiences in primary school
- **E**mpathise and acknowledge your child's feelings

Supporting your child's transition through
Primary 1

Build a caring home environment to nurture the social and emotional skills of your child using these S.A.F.E. tips.



SUPPORT

- Consult some time every weekend to **play games** and **have fun** together.
- **Visit places** or take part in events that **both of you** enjoy.
- **Encourage** your child to **make new friends**.
- **Try an FTGP* Family Time** activities.

AFFIRM

- **Encourage** your child when he makes **observations**.
E.g. Say "That's interesting!" and ask why he/she said that.
- **Recognise small successes**.
E.g. Say "You've made another new friend in class - well done!"

FAMILIARISE

- **Find out** what primary schools have in store for students these days.
- **Do practical things to ease** your child into **new routines**.
E.g. Plan daily routines together, teach your child new habits like packing his/her bag.

EMPATHISE

- **Teach** your child words that **describe feelings**.
E.g. "It's okay to feel anxious about starting school."
- **Acknowledge** your child's **emotions**.
E.g. "It's okay to feel nervous about starting school."
- **Understand** your child's **needs**.
E.g. Start bedtime early. Children need a lot of sleep.

*From Teacher Guideline Period

Spend Time Chatting. Use T.A.D.

Talk	Ask	Discuss
Talk about fond memories of your own school days. E.g. What you did in Primary One; kind teachers and cheery classmates you had.	Ask about his/her thoughts and feelings about the school. E.g. FTGP* activities; when he/she felt happiest.	Discuss together what can be done if his/she has worries at school. E.g. Explore how people deal with conflicts.

QUICK TIPS

- **Listen** without **interrupting**.
- **Nod** your head and **ask questions** to show interest and affirmation.

*These tips may be used with children of other ages too. It depends on each child's needs. Using these tips as your child matures through the school years can help ease anxiety and worries, and build warmer and closer relationships of trust.

Ministry of Education Singapore

HOW CAN I SUPPORT MY CHILD THROUGH THE TRANSITION?

- Every child develops at a different pace.
- Some children learn things earlier, others need more time.
- Allowing them to learn at their own pace helps them enjoy the learning process.
- Some skills that parents can develop are:
 - Relating to others
 - Developing good habits
 - Nurturing positive learning attitudes



RELATING TO OTHERS

Build your child's interpersonal skills by:

- Modelling the use of friendly and polite phrases
 - "Hello! My name is...What is your name?"
 - "May I..... please?"
- Providing opportunities for your child to share and take turns during playtime with other children



DEVELOPING GOOD HABITS

Routines help your child build confidence and learn to manage themselves.

Guide your child to do the following independently:

- Dress themselves
- Tie their shoelaces
- Buy food at the canteen
- Make healthy food choices
- Eat on their own
- Pack their bag
- Practise good toilet habits
- Exercise good hygiene habits e.g., washing their hands regularly



NURTURING POSITIVE LEARNING ATTITUDES

Developing the right learning attitude will help your child learn better.

You can encourage your child to:

- Ask questions about their experiences and the world around them
- Express their thoughts and feelings and discuss what can be done if they have worries
- Practise life skills independently, like buying food and drinks on their own and asking for permission



RSS students have a unique identity



Every student **A Little Master**



Personal Grooming

He/she is responsible for his/her personal grooming - to be neat and clean in appearance.

Learning

He/she is responsible for his/her learning.

Attire - Boys



- Boys must be clean shaven and neat in appearance.
- Maintain short hair
- Shirt must be tucked in at all times.



Attire - Girls



- Girls with long hair must tie up their hair.
- Hair accessories
 - matt black and dark blue only
- Small ear studs (gold, silver or black only)
- Blouse must be tucked in

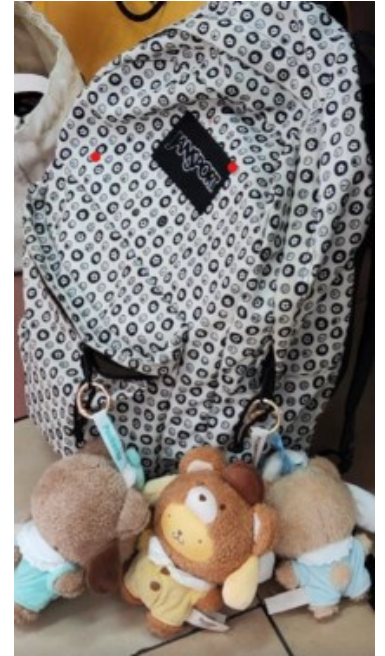
Student Attire

Day	Required School Attire	Remarks
Every Wednesday	Encouraged to be in school Uniform (except for those classes having PE lessons on Wednesday)	<ul style="list-style-type: none">Students who have PE lessons on Wednesdays will be allowed to put on their PE attire throughout the day.
All other days of the week	<ul style="list-style-type: none">On PE and PAL Days: PE AttireOn non PE and PAL Days<ul style="list-style-type: none">- Full school uniform OR- PE T-shirt and School Shorts/ Skirt	<ul style="list-style-type: none">Primary 3 to 6 female students are required to wear their school skirt before and after PE lessons.Primary 1 and 2 students may do likewise.



Observation from P1 form teachers 2024

- **Heavy Schoolbags**
 - Bring unnecessary items
 - Bring too many storybooks
 - Bring a large accordion file
 - Bring lots of food for mealbreak



Name Tag

All students must have their name tags sewn/ironed onto their shirts/blouses/ PE T shirts below the school crest.



Colour: **Red** (2025 P1 cohort)

- For the first 2 weeks, P1 students will be wearing their temporary nametag with lanyard
- Behind the name tag, the following need to be clearly indicated:
 - ❖ The school bus number (if your child is taking school bus)
 - ❖ Indicate if your child is going home via Gate 5
 - ❖ Parent's contact number

Student Handbook



- Check your child's handbook for homework/instructions
- The handbook is one of the modes of communication with the teachers.
- Teach your child to show his/her handbook to the teacher if there is any message from the parent.



Other useful information

Please refer to the P1 Information booklet (will be shared with parents by end November) for more information.

Some important information:

- School start time : 7.30 am
- Dismissal time for P1 : 1.25 pm
- Dismissal gate for P1 : Gate 5

Please wait for your child/ward at the scheduled dismissal time. Parents are reminded not to come too early to fetch your child/ward. After fetching your child/ward, kindly take your leave immediately so that there is more space for our students' movement.



Caring Community
Innovative Leaders
愿景: 博爱, 创新, 引领



Other useful information

- School Bus : School bus will leave the school around 1.40 pm
Primary 1 students who are taking the school bus will wait in the school hall upon dismissal and board the buses under the supervision of the bus drivers.
- Recess time : 8.30 am to 9.00 am
- Meal Break time : 11.25 am to 11.35 am



Caring Community
Innovative Leaders
愿景: 博爱, 创新, 引领



Let's work together for the overall development and well-being of your child and for a great school year ahead!



Caring Community
Innovative Leaders
愿景: 博爱, 创新, 引领



FAQs

Frequently Asked Questions



Q: When will my child receive his/her timetable?

A: During the first week of school.



Caring Community
Innovative Leaders
愿景: 博爱, 创新, 引领



FAQs

Frequently Asked Questions



Q: What does my child need to bring everyday to school?

No.	Items
1.	School Handbook (Fill in your child's personal particulars)
2.	Homework File (One Button PVC Clear File)
3.	Stationery
4.	Colour Pencils
5.	English Story book (Mondays, Tuesdays, Wednesdays) Chinese Story book (Thursdays and Fridays)
6.	Water Bottle
7.	Mini Whiteboard set
8.	Personal thermometer (a thermometer will be given to your child on the first day of school)
9.	Money (\$2 to \$2.50 in coins) / Food for recess, meal break



Q: My child takes the school bus. Since it is the first day of school and I have taken leave for the day, can I arrange to fetch him home on the first day via Gate 5?

A: It is not advisable as we would encourage you to set the routine from Day 1. Your child may be confused on Day 2 and think that you will pick him/her up at Gate 5 and hence miss the school bus.



Caring Community
Innovative Leaders
愿景: 博爱, 创新, 引领





Q: How many sets of PE attire and school uniform should I buy for my child?

A: As the students are encouraged to wear their school uniform on Wednesday if they do not have PE lessons, it is advisable to buy at least 2 sets of PE attire and 1 set of school uniform.



FAQs

Frequently Asked Questions



Q: When will I receive the booklist?

The P1 Booklist is already available. When you purchase books from the website of Pacific Bookstore, the booklist will be shown. Otherwise, the booklist is also available on our school website.



Caring Community
Innovative Leaders
愿景: 博爱, 创新, 引领



Screenshot of where to locate P1 booklist on School Website

沟通与交流

Communication

学校信息 School Hours and
School Procedures

校规 School Rules

健康与安全信息 Health and
Safety Matters

学生支助计划 Support for
Students

服务供应商 School Service



ders

School Bookshop

Supplier:	Pacific Bookstores Pte Ltd
Operating Hours:	Mondays, Tuesdays, Thursdays and Fridays: 8.00am-3.00pm Wednesdays: 8.00am - 2.30pm
Contact:	9047 9455
Website:	www.pacificbookstores.com
Link for Booklist:	P1 Booklist 2025

School Uniform & Nametag

Supplier:	Shanghai School Uniforms Pte Ltd
Address:	63, Ubi Ave 1, #04-09, 63@Ubi Singapore 408937
Operating Hours:	Monday - Saturday: 10.00am-6.00pm, Lunch Time: 1.00pm-2.00pm



Q: Can P1 Parents accompany their child to school on the first day of school?

2 parents will be allowed to accompany their child to school. We will inform you of any change via Parent Gateway closer to school re-reopening, if needed.



Caring Community
Innovative Leaders
愿景: 博爱, 创新, 引领



FAQs

Frequently Asked Questions



Q: Will there be a buddy for my child?

We have a recess buddy system for our P1 students at the beginning of the Term to guide them when they purchase food at the canteen. In addition, the school will also ensure there are sufficient staff deployed to guide our P1 students during the first few days of school.



FAQs

Frequently Asked Questions



Q: What is the difference between P1 Higher Chinese Language and Chinese Language?

- Your children will be offering Higher Chinese Language as RSS is an SAP School. If you compare the P1 Higher Chinese Language and Chinese Language textbooks, they are almost the same. The only difference is that P1 students offering Higher Chinese Language will be exposed to more Chinese characters.



Caring Community
Innovative Leaders
愿景: 博爱, 创新, 引领



FAQs

Frequently Asked Questions



Photographs of Student for Non-Commercial Use

Photograph(s) or video image(s) of your child/ward may be captured during school activities and events. The school may use and publish such photographs and/or video recordings in school publications, on the school website and on other communication channels (whether in print, electronic, web or other media). Please write to the school if you do not wish for any photograph/image taken of your child/ward to be used in 2025.

FAQs

Frequently Asked Questions



Personal Hygiene and Responsibility

Students should continue with good hygiene practices such as washing their hands frequently with soap. Please seek prompt medical attention for your child/ward if he/she is not feeling well. **We seek your cooperation not to send your child/ward to school if he/she is unwell. Please allow him/her to rest at home for the full duration specified in his/her medical certificate (MC).**





THANK YOU



Caring Community
Innovative Leaders
愿景: 博爱, 创新, 引领

